

SpotSupport Registration

On the first run of the program "GALCreator" user will be viewed with a form to enter the user details to register himself/herself on the www.spotsupport.com community. This will allow the user to use the forums of the spotsupport web site. So the registered users will be able post questions, comments etc about the Korteks programs and machines they have by sign into spotsupport forums with the username and password provided at the registration, and submitting a ticket.

Registration Steps

First the user must fill the "User Information" and "Product Information" sections in the main window and click on register button. Please note that serial number of the SpotBot machine they have must be correctly entered to the "SpotBot Serial No" text box.



The screenshot shows a window titled "Register GAL Creator" with a close button in the top right corner. The main content area is titled "SPOTSUPPORT REGISTRATION" in blue, bold, italicized text. Below this title is a horizontal line, followed by the section header "User Information" in bold, underlined text. The form contains several input fields: "First Name", "Initials", and "Last Name" (each with a text box); "Email Address" (with a text box); "Organization Name" (with a text box); "Organization Address" (with a text box); "Contact No." (with a text box); "Town" (with a text box); "State or Proviencce" (with a text box); "Country" (with a text box); and "Zip / Postal Code" (with a text box). Below these fields is another section header "Product Information" in bold, underlined text. This section contains a single input field for "SpotBot Serial No.". At the bottom of the form are two buttons: "Register" and "Exit".

If the user has access to internet then he/she will be viewed with a form to enter a username and a password to register on spotsupport. By submitting this form, user could get registered on spotsupport. Confirmation emails will be sent to the user's email address when the submitted data is sent to spotsupport for registration.

Create SPOTSUPPORT account [X]

To be able to generate support tickets to get help from spotsupport forums, user must register on spotsupport with a username and a password. If you already have a spotsupport user account please check the below check box.

I already have a SpotSupprot Web / User account

User Name

Password

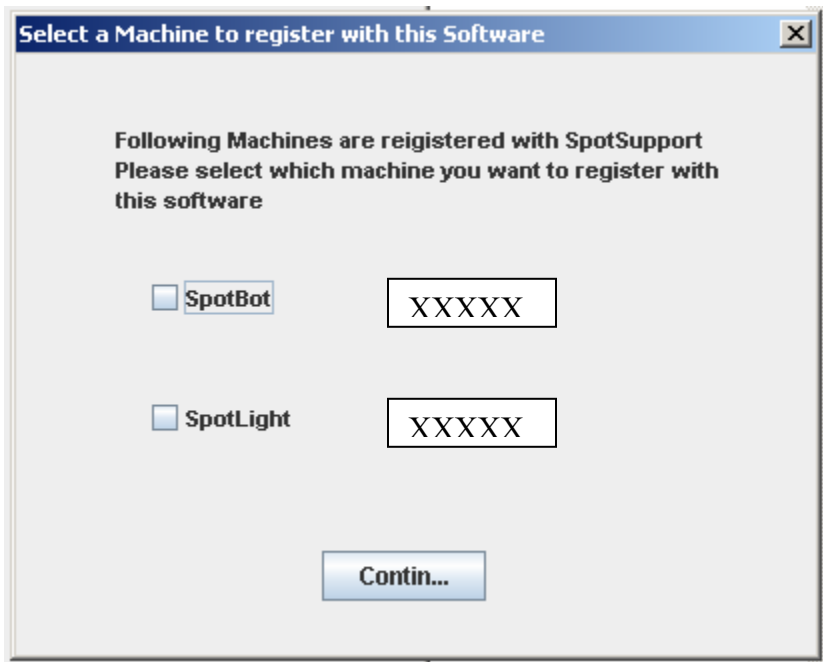
Retype Password

OK

If you have a SpotSupport Account make sure you entered the Correct User Name and the Password

If you are a New user, Make sure you retype the password correctly and if you are seeing this window after the first time your User Name may not be avilabe Retype a new User name and a Password

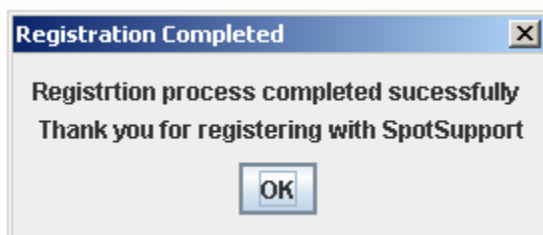
If the user already have a spotsupport account and have registered machines with spotsupport, then his/her registered machines will be listed on a window. So the user can select the machine to register the new software (GALCreator), and click on the continue button.



If the user doesn't have access to internet at this point then he/she will be informed with the following dialog box to register the software later, but the user will be able to use the GALCreator software.



If the registration process does not finish due to an internet failure then at a later time when the program is activated at a time user has access to internet, system will complete the registration process. Here the system will ask the user for a username and a password for the registration.



GAL Creator V 1.0.03

This software allows you to create Gal Files using files output from Spocle Generator and a Gene Map file.

Requirements

- To run the GAL Creator software, user must have J2SDK 1.4 or J2RE 1.4 or later installed in his/her computer.

JDK and JRE are available for free in the below link,

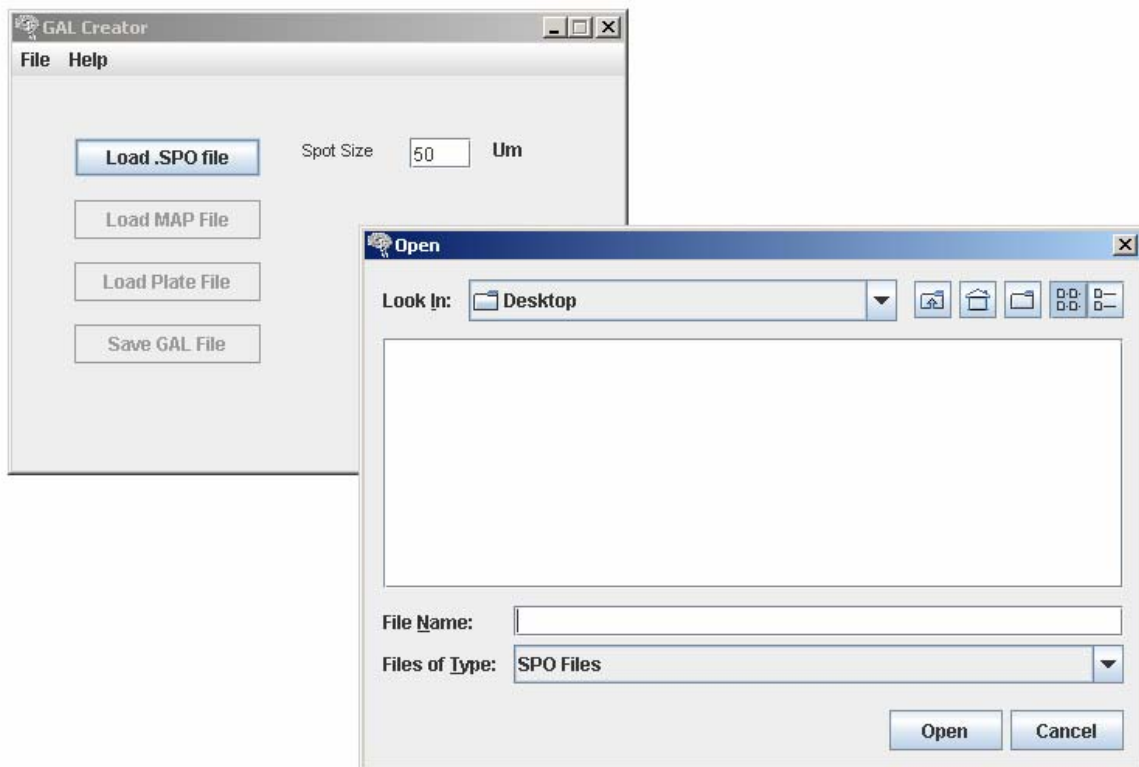
<http://java.sun.com/j2se/1.4.2/download.html>

- To use the GAL Creator software, user must have the .SPO file, map file and the GENE file relevant to the substrate used in the user's SpotBot.

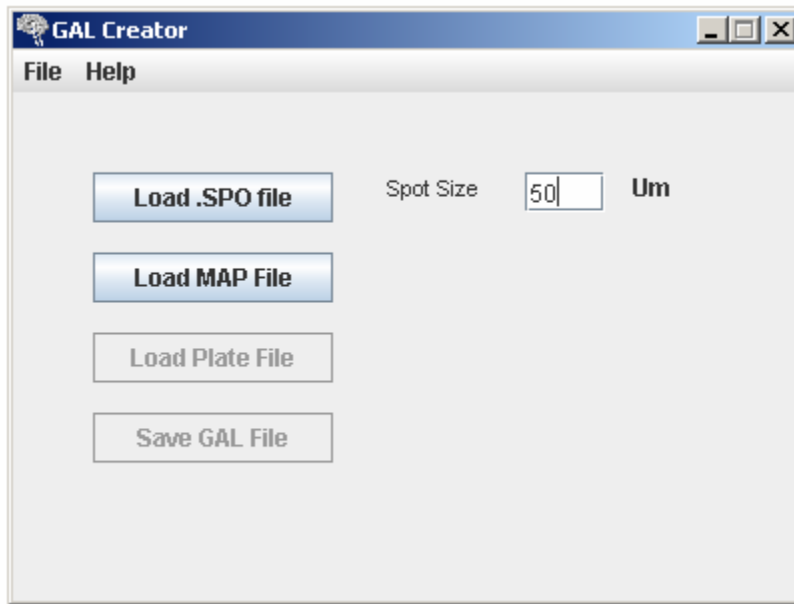
(Example formats of above files are listed at the end of this file)

Operating Instructions

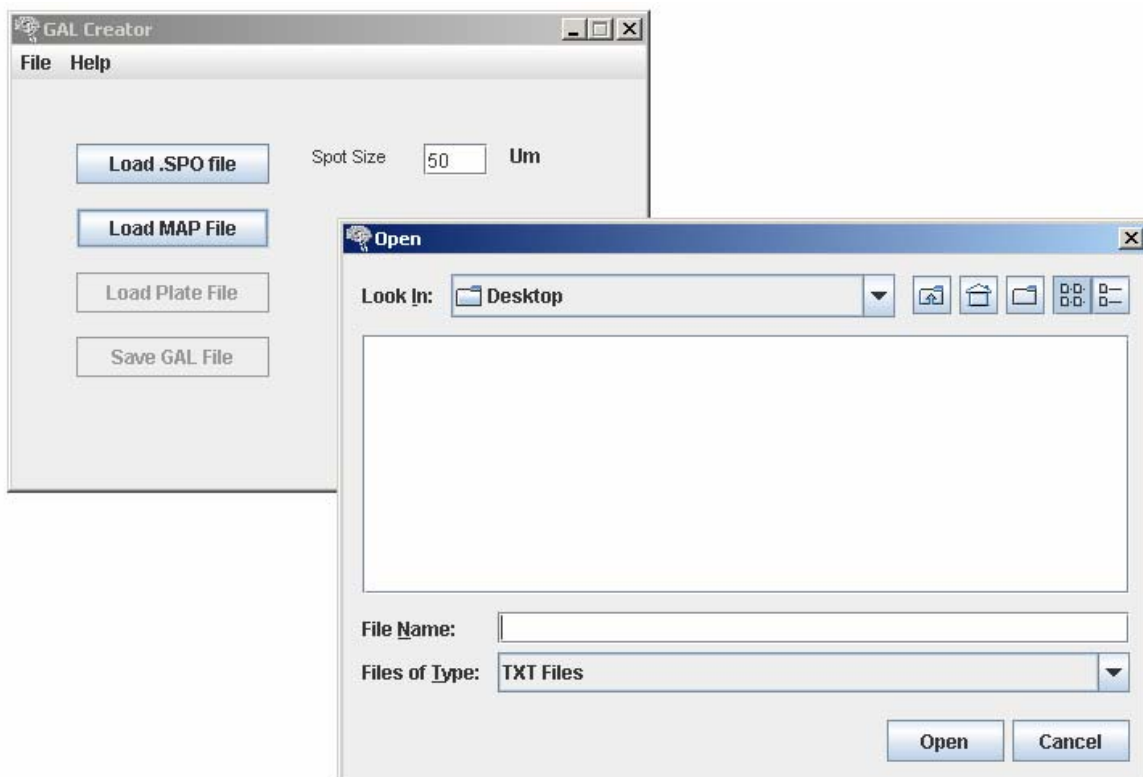
1. Click on the "Load SPO file" and select the SPO file



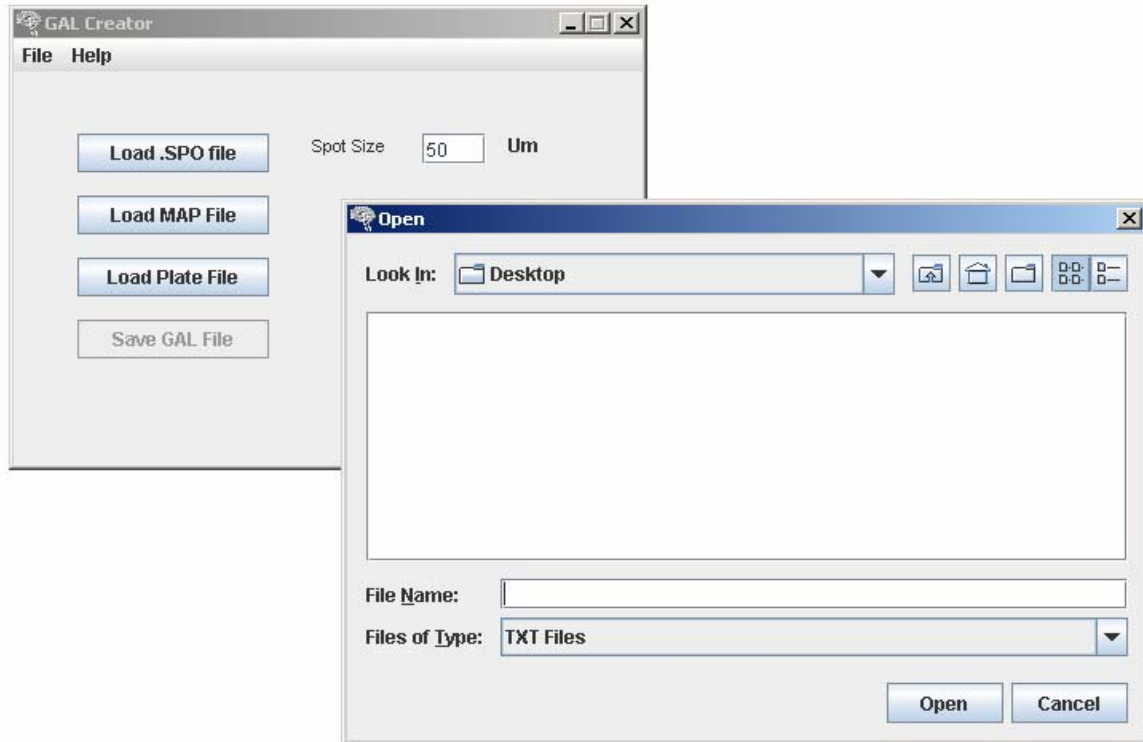
2. Enter the spotsize of the arrays



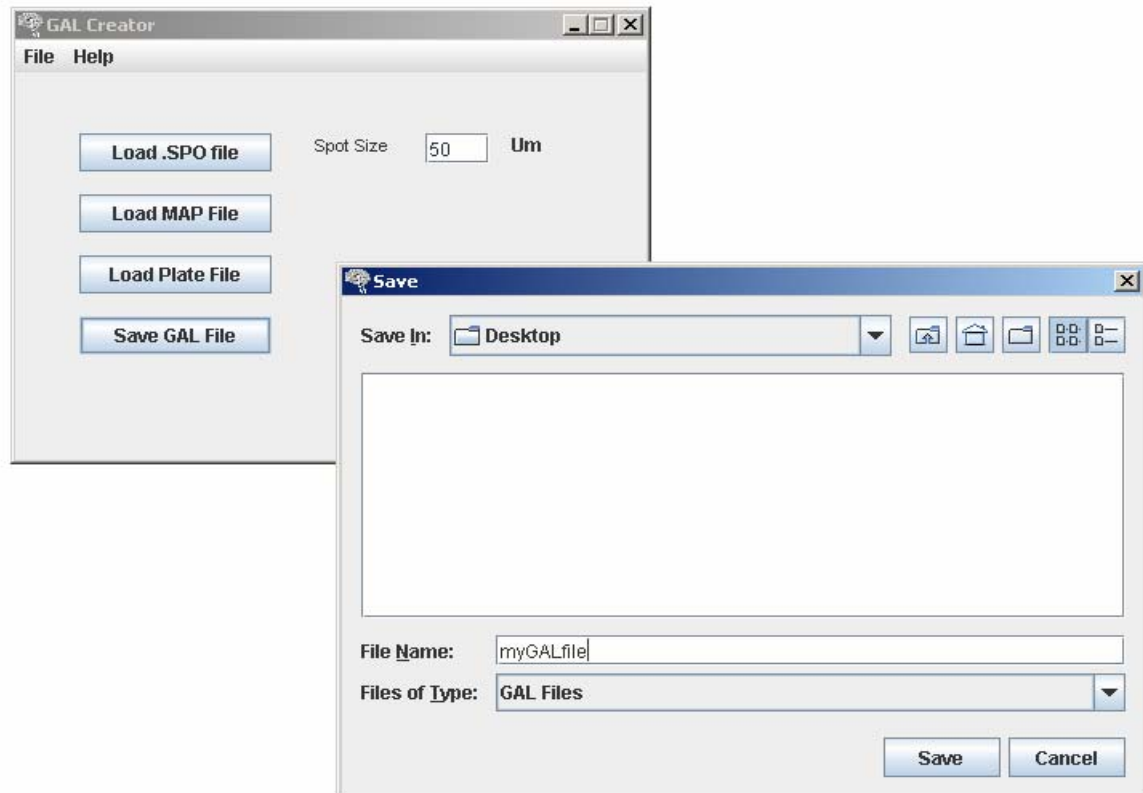
3. Click on the "Load MAP file" and select the MAP file which is created at the generation of the .SPO file



4. Click on the "Load gene File" and select the gene file related to the above .SPO file



5. Click on "Save GAL file" and browse the location and enter the file name for the GAL file to be saved.



Important Information

.SPO and map files must be generated using the SPOCLEGen software

The gene file should have the following entries in the **ORDER GIVEN BELOW**.

Plate	Row	Column	ID	Name
1	A	1	gene1	plate1.A1
1	A	2	gene2	plate1.A2
1	A	10	gene10	plate1.A10
1	A	11	gene11	plate1.A11
.
.
.

Format of a GAL file

ATF	1.0	(Required) First line of an ATF file; the same in all GAL files: File format (ATF) and version (1.0).
8	5	(Required) Second line of an ATF file: 8 (number of optional header records). 5 (number of data columns).
"Type=GenePix ArrayList v1.0"		(Required) Type of file; the same in all GAL files.
"BlockCount=4"		(Optional) Number of blocks described in the file.
"Blockn="		(Optional) The position and dimensions of each block. There is one record for each block, and each record contains 7 fields. Each field is separated by a comma followed by a space.
xOrigin		X position of center of top leftmost feature of current block (in μm).
yOrigin		Y position of center of top leftmost feature of current block (in μm).
FeatureDiameter		Diameter of features within the current block (in μm).
xFeatures		Number of columns of features in current block.
xSpacing		Column spacing of current block (in μm).
yFeatures		Number of rows of features in current block.
ySpacing		Row spacing of current block (in μm).
"Block" "Column" "Row" "Name" "ID"		(Required) Last line of the header, containing column titles for the data records. The quotation marks are advised, but not necessary.
Block		(Required) The block number for the feature (required).
Column		(Required) The column location within the block (required).
Row		(Required) The row location within the block (required).
Name		(Optional) Name to be displayed for the given feature (optional; limited to 40 characters in GenePix Pro 4.0 and earlier, no limit in 4.1).
ID		(Required) Identifier for each feature (required; limited to 40 characters in GenePix Pro 4.0 and earlier, no limit in 4.1).