

SpotSupport Registration

On the first run of the program "GALCreator" user will be viewed with a form to enter the user details to register himself/herself on the www.spotsupport.com community. This will allow the user to use the forums of the spotsupport web site. So the registered users will be able post questions, comments etc about the ArrayIt software and machines they have by sign into spotsupport forums with the username and password provided at the registration, and submitting a ticket.

Registration Steps

First the user must fill the "User Information" and "Product Information" sections in the main window and click on register button. Please enter correct details because you will have to confirm your email address after receiving automatically generated confirmation email from spotsupport registration module. (User must be connected with Internet to use this software and the SpotBot machine must be switched on)

Spot Support Registration - GAL CreatorV2.0.0

SPOTSUPPORT REGISTRATION

First Name: TEST01 Initials: TEST01 Last Name: TEST01

Email Address: test@test.com

Organization Name: TEST01 Inform New Updates

Organization address: TEST01, TEST02, TES03 Machine Serial No.: SB 200705666667

Contact No.: 038388743764

Country: United States

State or Proviencie: FLORIDA

City\Town: TEST01

Zip or Postal Code: TEST01

Register Exit

GAL Creator V 2.0.0 Beta

This software allows you to create Gal Files using files output from Spocle Generator and a Gene Map file.

Requirements

- To run the GAL Creator software, user must have Microsoft .NET Framework 2.0 or later installed in his/her computer.

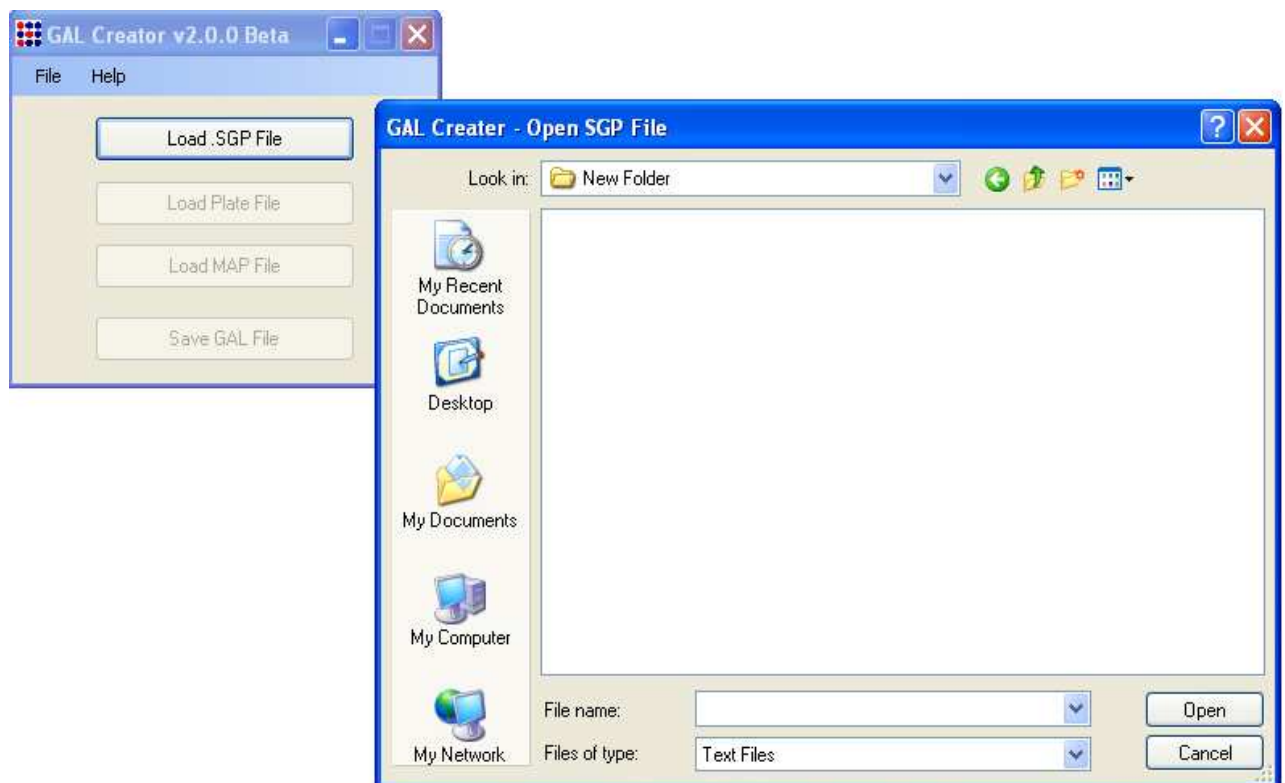
You can download it from <http://www.spotsupport.com/downloads/dotnetfx.exe>

- To use the GAL Creator software, user must have the .SGP file, map file and the GENE file relevant to the substrate used in the user's SpotBot.

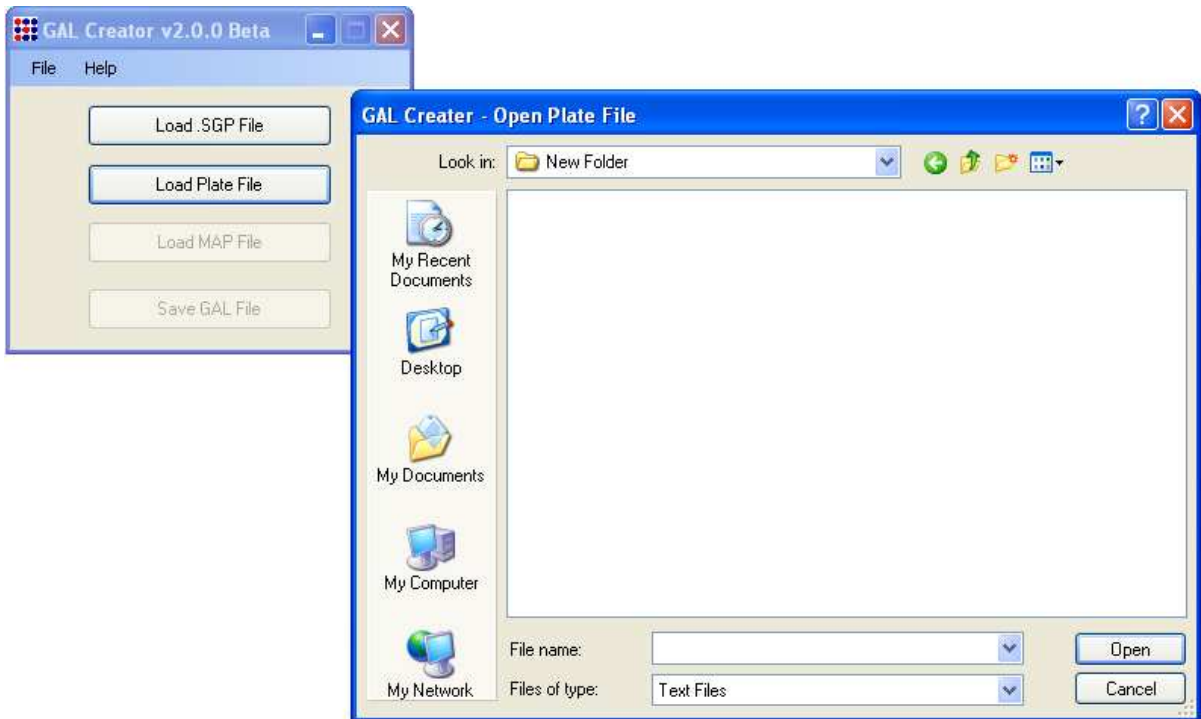
(Example formats of above files are listed at the end of this file)

Operating Instructions

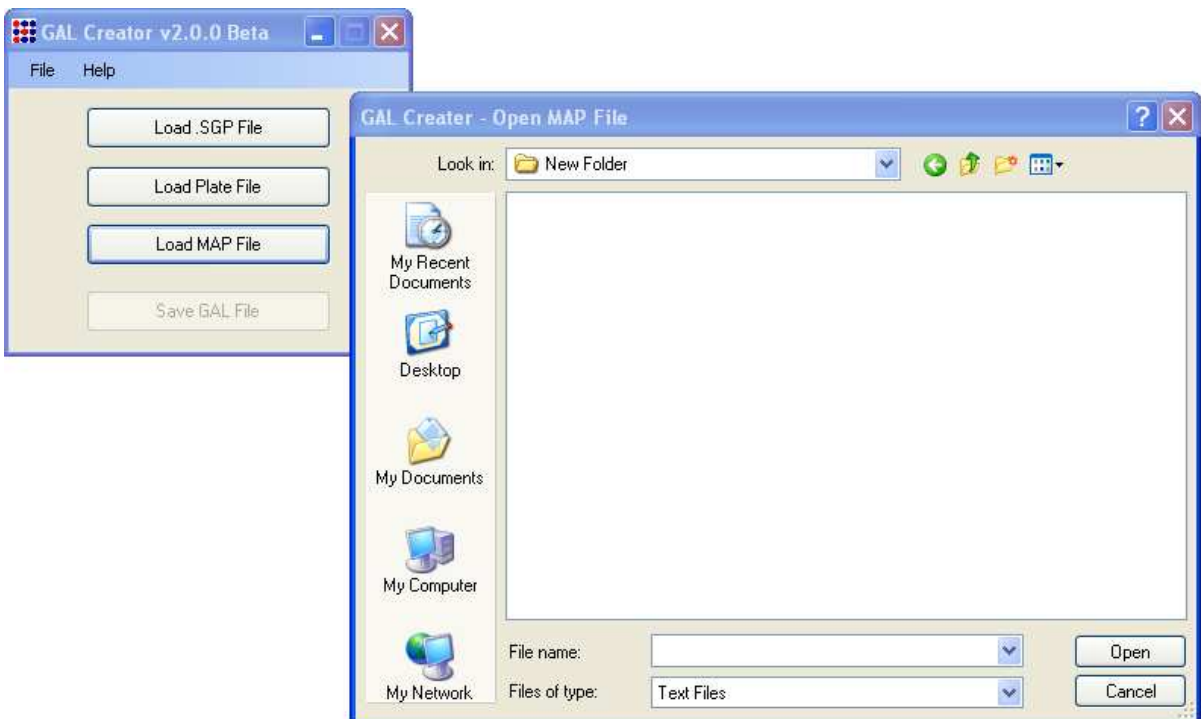
1. Click on the "Load SPO file" and select the SPO file



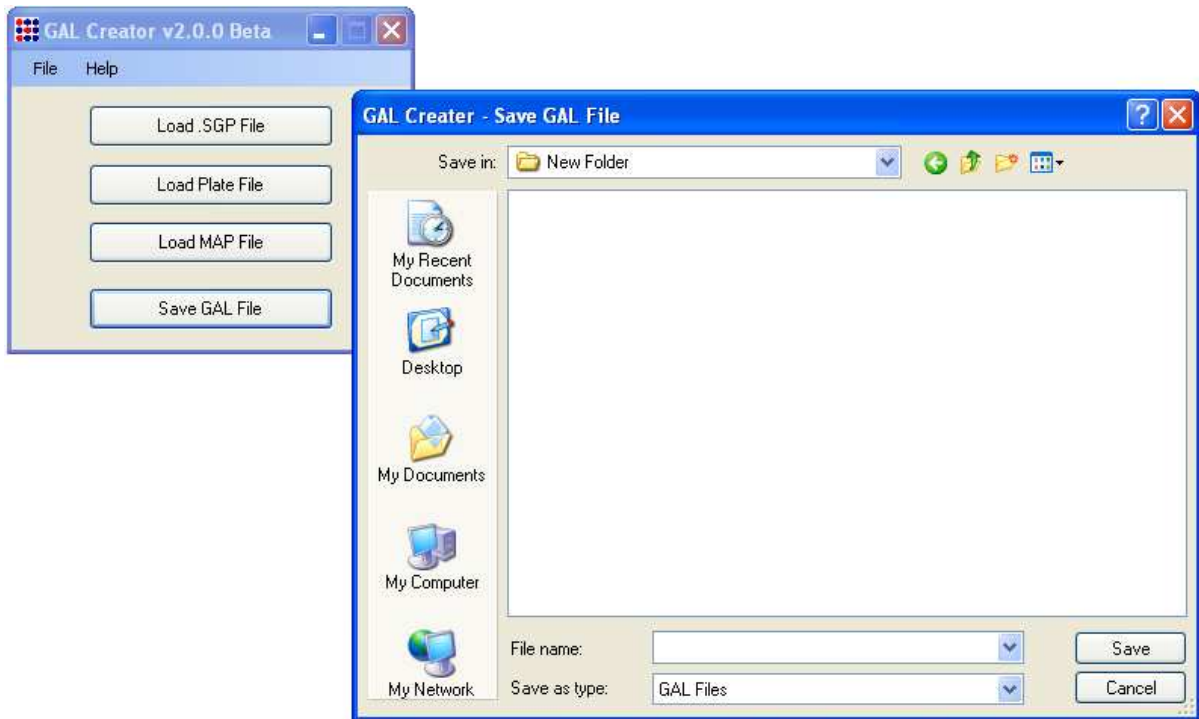
2. Click on the "Load Plate File" and select the gene file related to the above .SGP/.SPO file



4. Click on the "Load MAP file" and select the MAP file which is created at the generation of the .SGP/.SPO file



5. Click on "Save GAL file" and browse the location and enter the file name for the GAL file to be saved.



Important Information

.SGP and map files must be generated using the SPOCLEGen software while you create the .SPO file.

The gene file should have the following entries in the **ORDER GIVEN BELOW**.

Plate	Row	Column	ID	Name
1	A	1	gene1	plate1.A1
1	A	2	gene2	plate1.A2
1	A	10	gene10	plate1.A10
1	A	11	gene11	plate1.A11
.
.
.

Format of a GAL file

- ATF 1.0 (Required) First line of an ATF file; the same in all GAL files: File format (ATF) and version (1.0).
- 8 5 (Required) Second line of an ATF file: 8 (number of optional header records). 5 (number of data columns).
- "Type=GenePix ArrayList v1.0" (Required) Type of file; the same in all GAL files.

"BlockCount=4" (Optional) Number of blocks described in the file.
"Blockn=" (Optional) The position and dimensions of each block. There is one record for each block, and each record contains 7 fields. Each field is separated by a comma followed by a space.

xOrigin X position of center of top leftmost feature of current block (in μm).
yOrigin Y position of center of top leftmost feature of current block (in μm).
FeatureDiameter Diameter of features within the current block (in μm).
xFeatures Number of columns of features in current block.
xSpacing Column spacing of current block (in μm).
yFeatures Number of rows of features in current block.
ySpacing Row spacing of current block (in μm).

"Block" "Column" "Row" "Name" "ID" (Required) Last line of the header, containing column titles for the data records. The quotation marks are advised, but not necessary.

Block (Required) The block number for the feature (required).
Column (Required) The column location within the block (required).
Row (Required) The row location within the block (required).
Name (Optional) Name to be displayed for the given feature (optional; limited to 40 characters in GenePix Pro 4.0 and earlier, no limit in 4.1).
ID (Required) Identifier for each feature (required; limited to 40 characters in GenePix Pro 4.0 and earlier, no limit in 4.1).